

IMPORTANT - READ OPERATOR'S MANUAL BEFORE OPERATING OR MAKING ADJUSTMENTS

Seat Adjustment

Loosen bolts on sliding brackets under each side of the seat, slide seat forward or backward to desired position, tighten bolts. Do not operate the mower with bracket bolts in "loose" position.

Mower Blade Operation .

To engage, mower blades, turn engagement lever on floor, slowly to the "ON" position. To disengage mower blades, turn lever, slowly, to the "OFF" position.

Removing The Body

1. Disconnect throttle cable from engine:
2. Disconnect the wiring loom from the body by turning the threaded collar on the connector in a counterclockwise direction. This connector is located at the left rear of the body.
3. Remove four control lever bolts and remove upper control levers (P/N 9079 & 9080).
4. Remove the one acorn nut on the body floor and release latches on the rear of body near each side.
5. Place height adjustment lever in the vertical position and mower deck engaging lever in the "OFF" position. Carefully lift body from chassis.
6. For assembly, reverse above procedure.

Removing The Mower Deck

1. Loosen belt keeper (P/N 2294), located under the engine, by loosening two rear engine mounting bolts, allowing the deck drive belt to come free of the rear pulley.
2. Disconnect the wiring loom at the deck safety switch (P/N 4242).
3. Remove the two clevis pins (P/N 3072) from the two rear L-rods (P/N1355) and slide from slots.
4. Remove clevis pin (P/N 3072) from L-rod attached to lift handle and slide from slot.
5. Remove clevis pin (P/N 3072) from front deck hanger shaft (P/N 1322), located at front of mower deck on slide plates welded at battery box, and remove.
6. Lift front of mower chassis clear of-deck. Roll chassis free of the deck.
7. To install, reverse the above procedure.

Adjustment Of Mower Deck Drive Belt

1. This mower deck drive belt is tensioned by a spring loaded engagement idler quadrant.
2. This system is designed to maintain the proper belt tension at all times.
3. Belt tension can be adjusted by moving the engaging rod (P/N 7013) into the outside hole of engagement handle (P/N 7020).
4. After belt tension is adjusted, check to assure that the mower blade will not turn freely when the engaging rod is in the "OFF" position.
5. If the mower blade turns freely, adjust the blade brake by loosening nut (P/N 3205) at the end of the brake linkage (P/N 7015).
6. After adjustment is achieved, perform the safety checks listed below.

"IMPORTANT" - Perform SAFETY CHECKS After Making Any-Repairs Or Adjustments

1. After reassembly, while seated on mower, attempt to start engine with mower deck engaged. Engine should not start. If engine does start, return the mower to an Authorized Dixon Dealer for adjustment or repair.
2. Disengage mower deck and start engine. With the operator in the normal seated position, engage mower deck and remove weight from-seat. The engine should stop. If the engine doesn't stop when operator rises from the seat, return the mower to an Authorized Dixon Dealer for adjustment or repair.
3. Engage, then disengage, mower blade in each cutting height. Insure that blade disengages and comes to a stop within (5) seconds in each height position. If blade does not disengage properly, contact your Authorized Dixon Dealer.

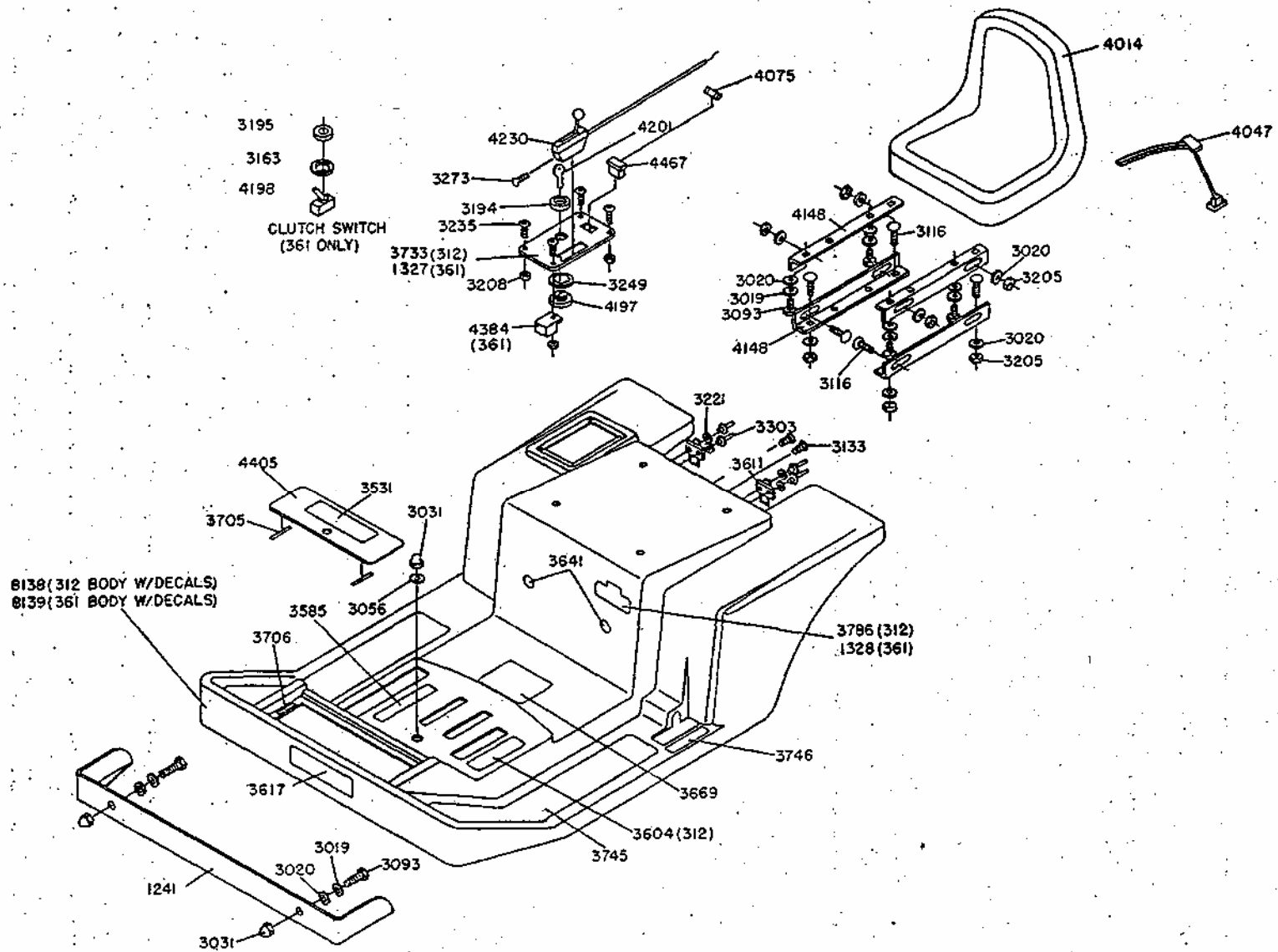
Parking Brake, Adjustment

Remove the body as described above. Tighten nut on brake rod (P/N 2533), located in front of the transaxle on each side, just enough to-prevent brake from slipping when engaged. CAUTION: Over tightening may cause premature wear on the brake band (P/N 5085).

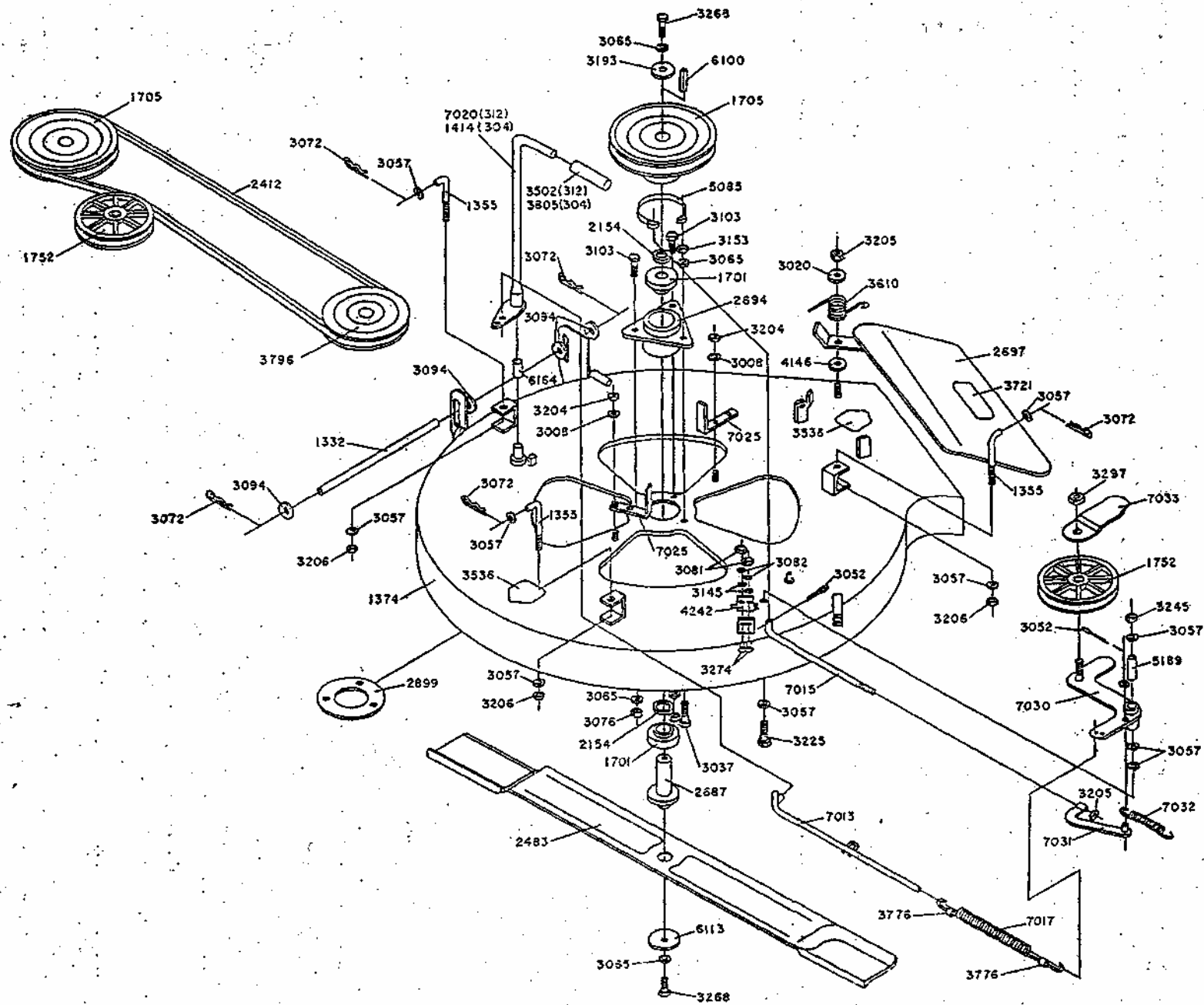
Removing The Mower Blade

Secure blade.(P/N 2483) from turning. Remove blade bolt from center of blade (P/N 3210), lock washer (P/N 3065) and blade washer (P/N 6173) then remove blade (P/N 2483). To reinstall, reverse above procedure.

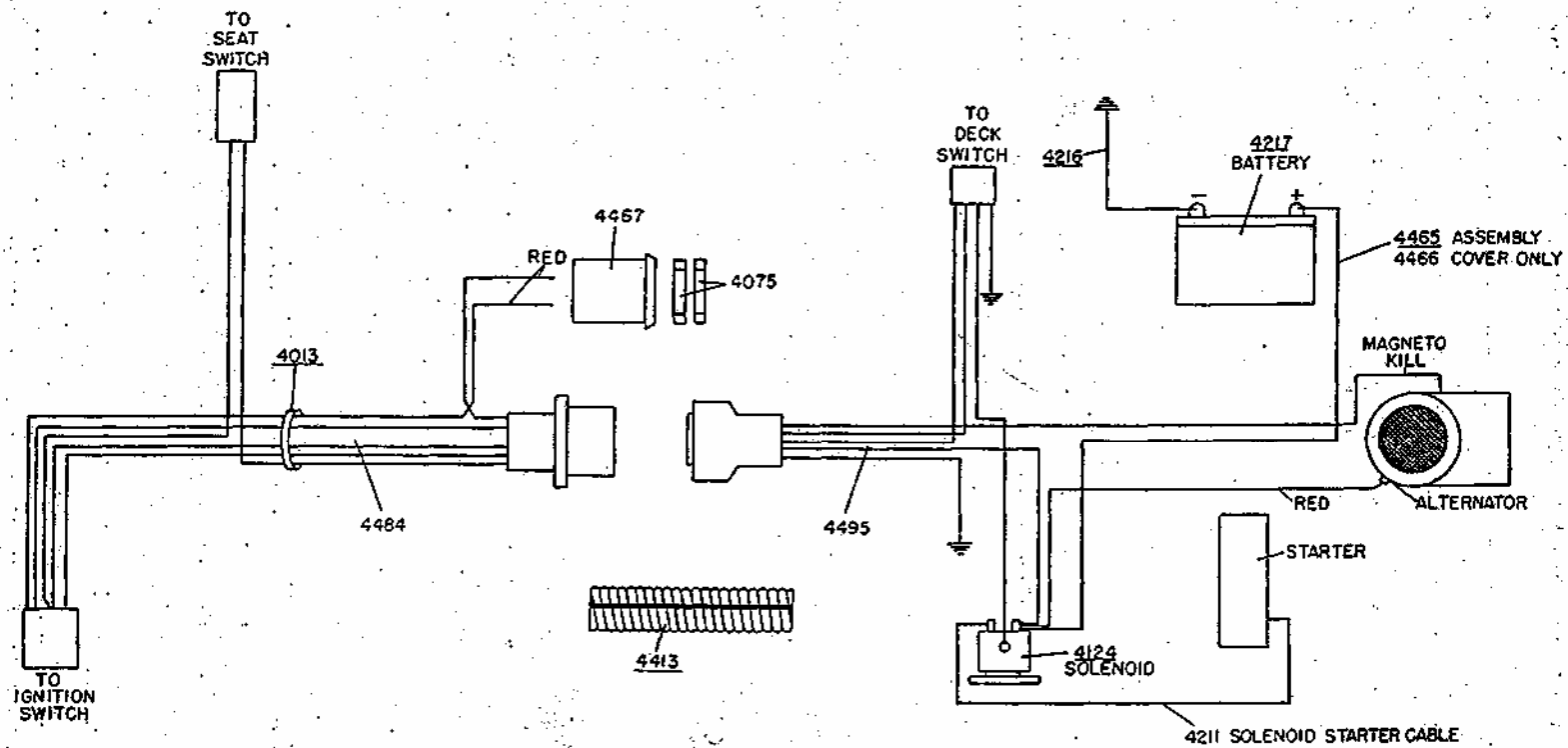
WARNING: Sharp, edges on blade can cause injury! Caution should-be exercised when service is required on blade.



BODY ASSEMBLY (MODEL 7TR 312)



MOWER DECK (MODEL 312)



BODY WIRING LOOM - 4484
 REAR WIRING LOOM - 4495
 WIRING KIT (312)-8669
 (SEE ASSEMBLY BREAKDOWN)

WIRING (MODEL ZTR 312)