

TECHNICAL DATA BROCHURE

ZTR 428 & 429

IMPORTANT — READ OPERATOR'S MANUAL BEFORE OPERATING OR MAKING ADJUSTMENTS.

Deluxe Seat Adjustment

Loosen bolts on sliding brackets under each side of the seat, slide forward or backward to desired position, and tighten bolts. Do not operate the mower with bracket bolts in "loose" position,

Mower Blade Operation

1. To start mower blades, pull up slightly on blade drive switch handle and move it forward to the "ON" position.
2. To stop mower blades, move switch handle to the "OFF" position.

Body Removal

1. Both the 428 & 429 use a (2) piece body. The upper body can be raised, up & back and also tilted forward to expose the transaxle.
2. To remove upper body, lift up and fold forward. Disconnect throttle cable (P/N 4679) from engine. Disconnect wiring harness by simply pulling plug apart. Then clip wire ties so harness is loose from seat bracket. Next remove cotter key (P/N 3052) from upper body mounting pin (P/N 1460). Then hold upper body and remove pin (P/N 1460).
3. Reverse above procedure to reinstall.

Safety Checks -- "Important"

1. After reassembly of body onto chassis and while seated on the mower, attempt to start the engine with mower deck engaged. The engine should not start. If engine does start, return mower to an Authorized Dixon Dealer for adjustment or repair.
2. Disengage mower deck and start engine with the operator in a normal seated position on the mower. Engage mower deck and remove weight from the seat. The engine should stop. If engine does not stop when operator rises from seat, return mower to an Authorized Dixon Dealer for adjustment or repair.

Parking Brake Adjustment

1. Adjustment points are located at rear of transaxle on each side. Remove roll pins from swivel fitting (P/N 2172). Turn swivel fitting on brake rod (P/N 5100) in, to tighten. Just enough to prevent brake from slipping when engaged.
2. Reinstall roll pin.
CAUTION: Over tightening may cause premature wear on brake band (P/N 5085).

Mower Peck Drive Adjustment

No adjustment necessary! The spring loaded idler pulley maintains proper tension throughout belt life.

Removing Mower Deck

1. Remove mower deck drive belt (P/N 6111) by pulling idler pulley (P/N 1752) away from belt and remove belt from the rear pulley.
2. Remove the two clevis pins (P/N 3072) from the L-rods at rear of deck and slide free from slots.
3. Remove the clevis pin (P/N 3072) from the lift linkage at the front of deck.
4. Remove cotter pin from shaft (P/N 1332) located at front of mower deck on slide plates welded at battery box. Slide shaft free.
5. Raise front of mower and roll it free of mower deck assembly.
6. To install deck, reverse above procedure.

Removing Mower Blade

1. Secure mower blade (P/N 8688) from turning.
2. Observe blade position when removing.
3. Remove blade bolt (P/N 3268), lock washer (P/N 3065) and blade washer (P/N 6H3).
4. To reinstall, reverse above procedure.
WARNING; Sharp edges on blade can cause injury.' Caution should be exercised when service is required on the blade.



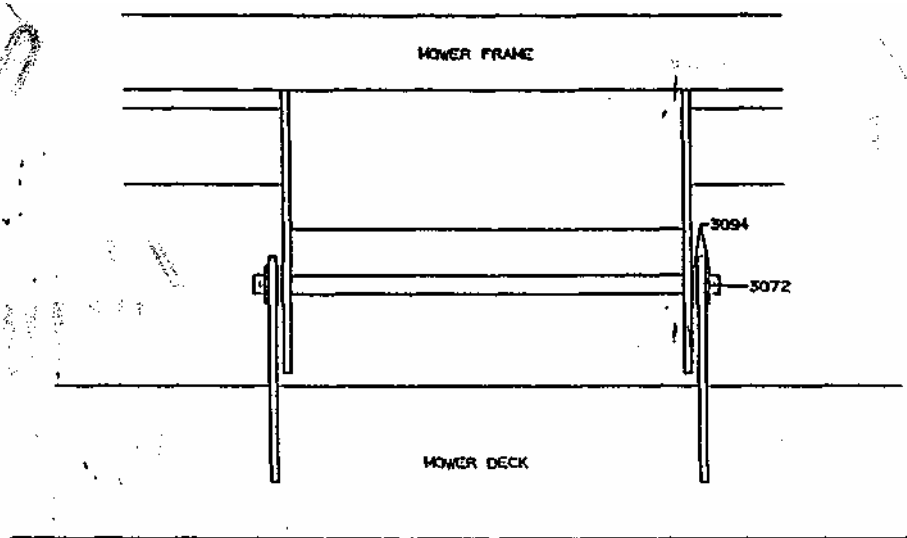
DIXON INDUSTRIES, INC
A BLOUNT COMPANY
AIRPORT INDUSTRIAL PARK
PO BOX 1569
COFFEYVILLE KS 67337 0945
316 251 2000
FAX 316 251 4117

BLOUNT

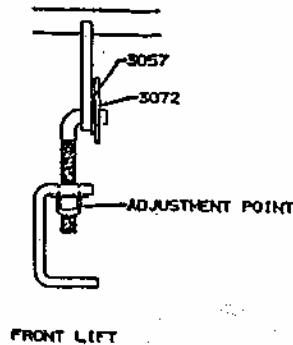
THE FOLLOWING INSTRUCTIONS REFER TO 42" MOWER DECKS -

Installation:

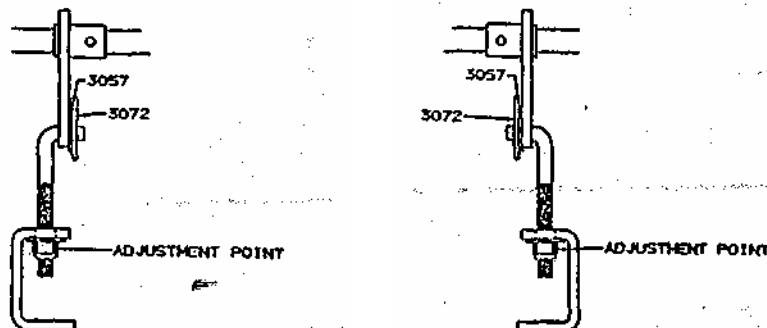
1. Position mower deck assembly under frame, raise front of mower deck assembly enough to allow cross shaft (P/N 1332) to slide through frame guides and mower deck guides. Install (1) washer (P/N 3094) and (1) hair pin cotter (P/N 3072) on each end of the cross shaft.

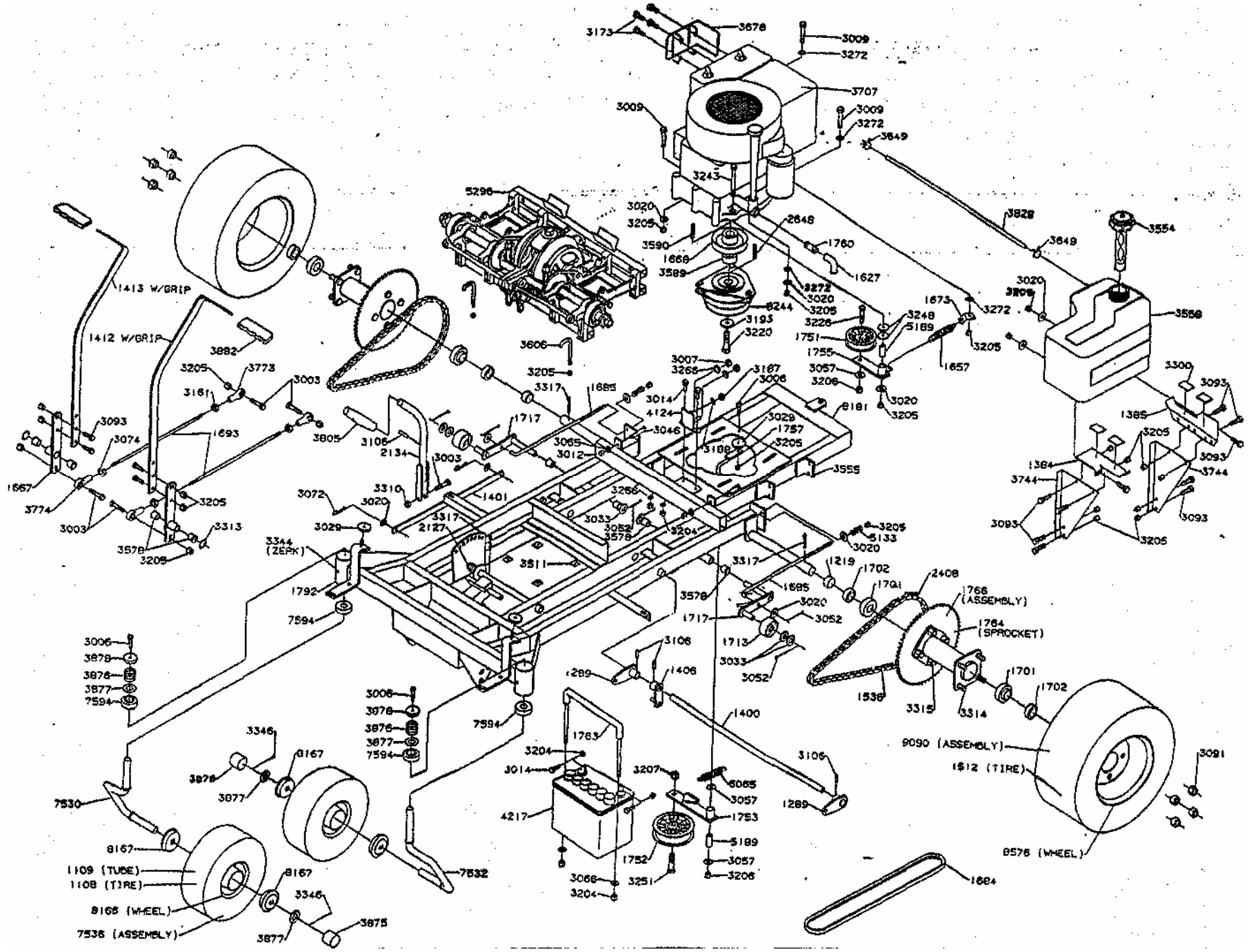


2. Attach short L-rod (P/N 1355) to lift arm as shown in drawing.

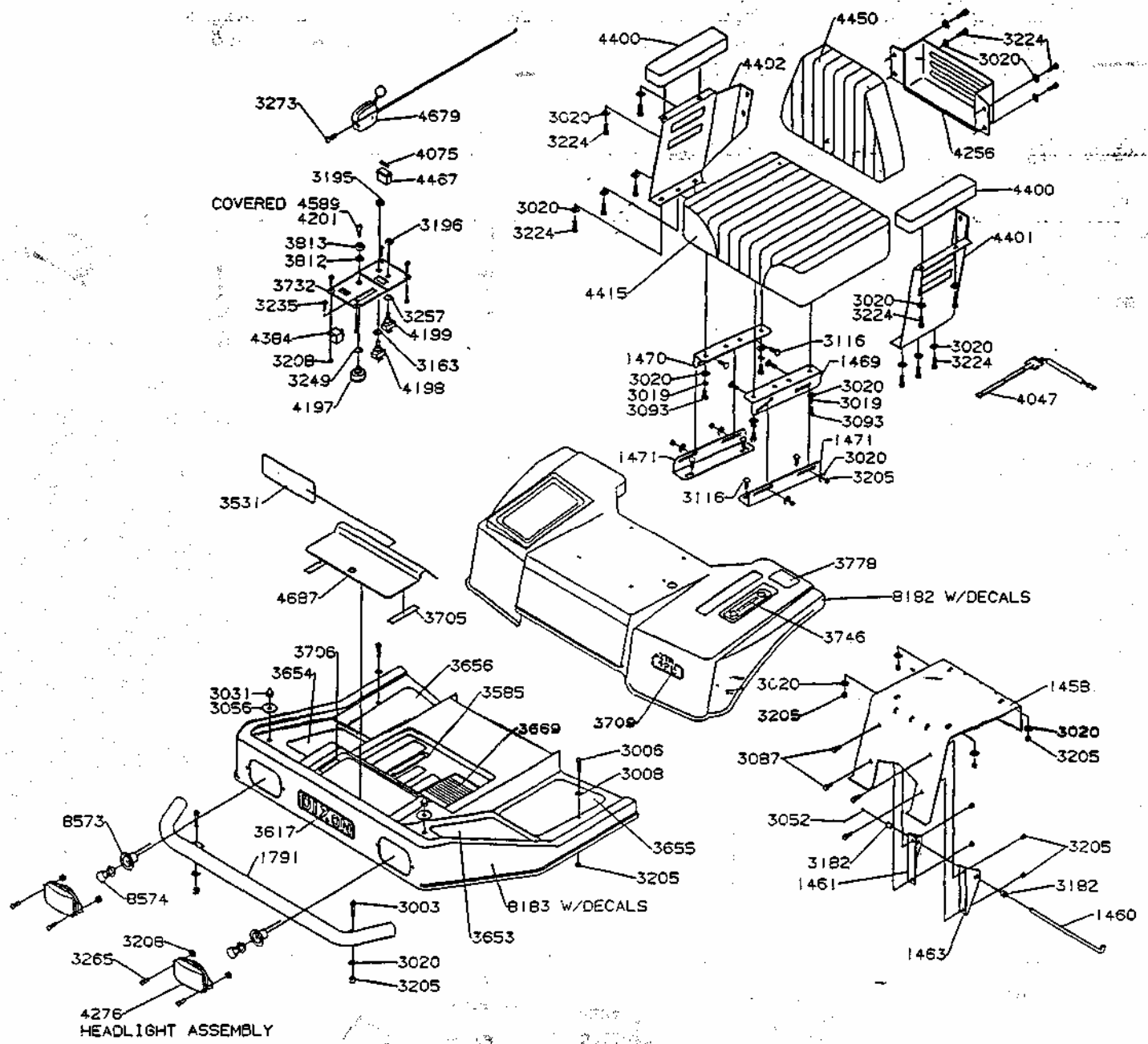


3. Attach long L-rod (P/N 1409) to rear lift arms as shown in drawing.

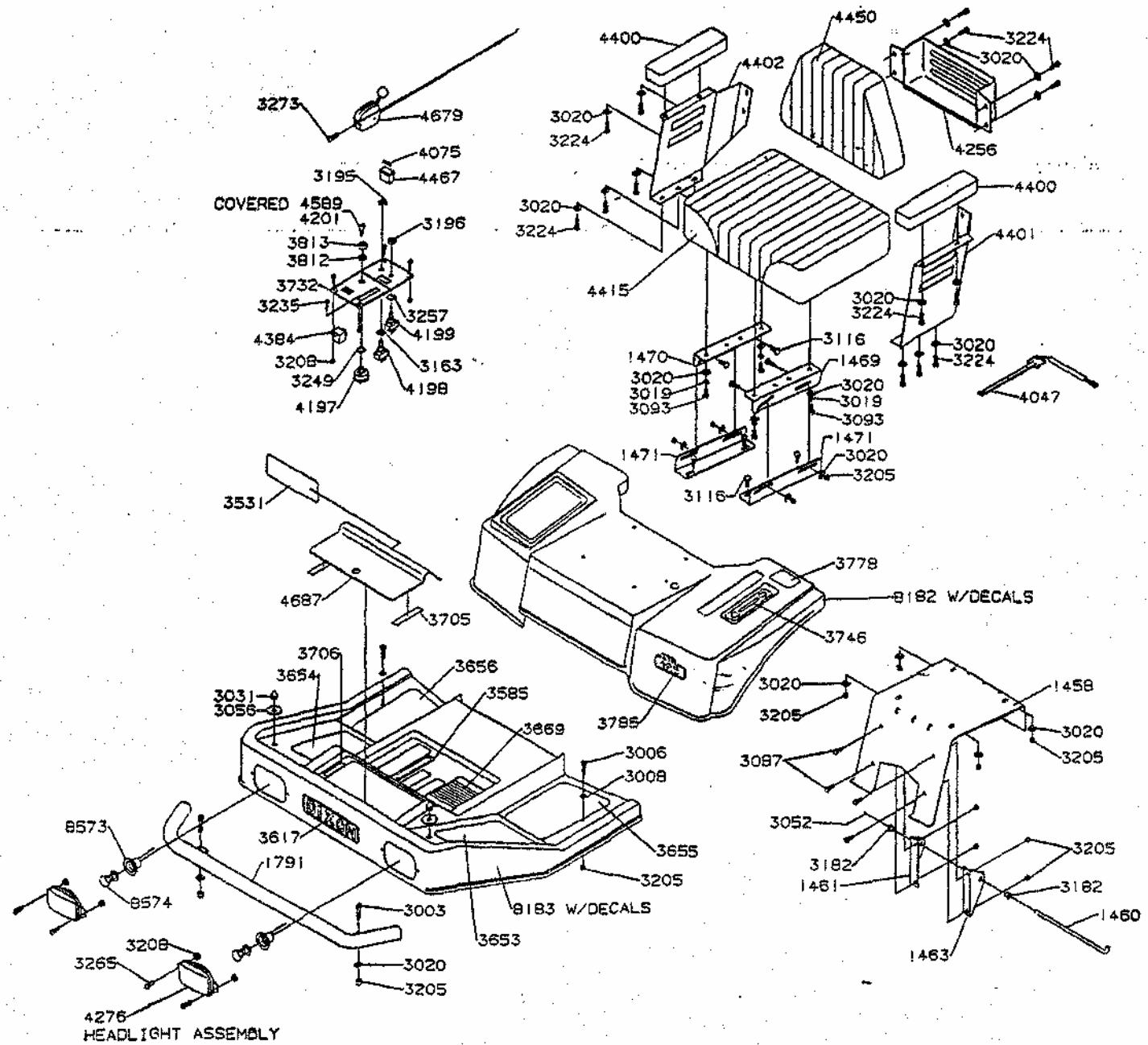




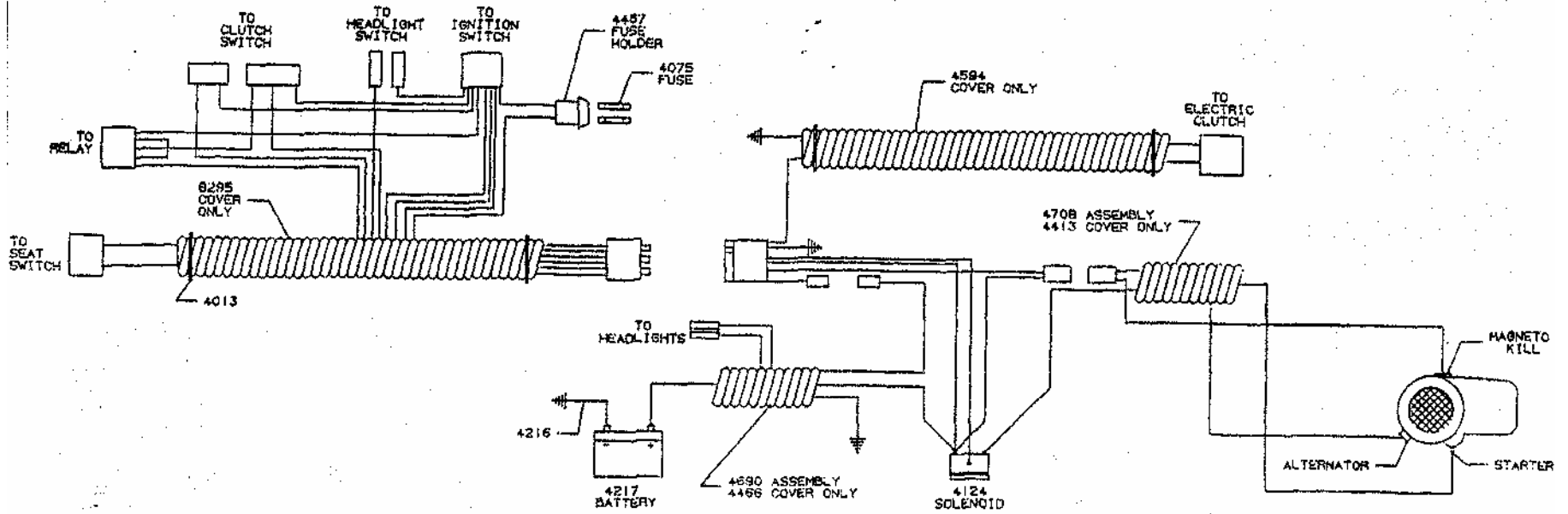
CHASSIS ASSEMBLY (MODEL 428)



BODY ASSEMBLY (MODEL 428)



BODY ASSEMBLY (MODEL 429)

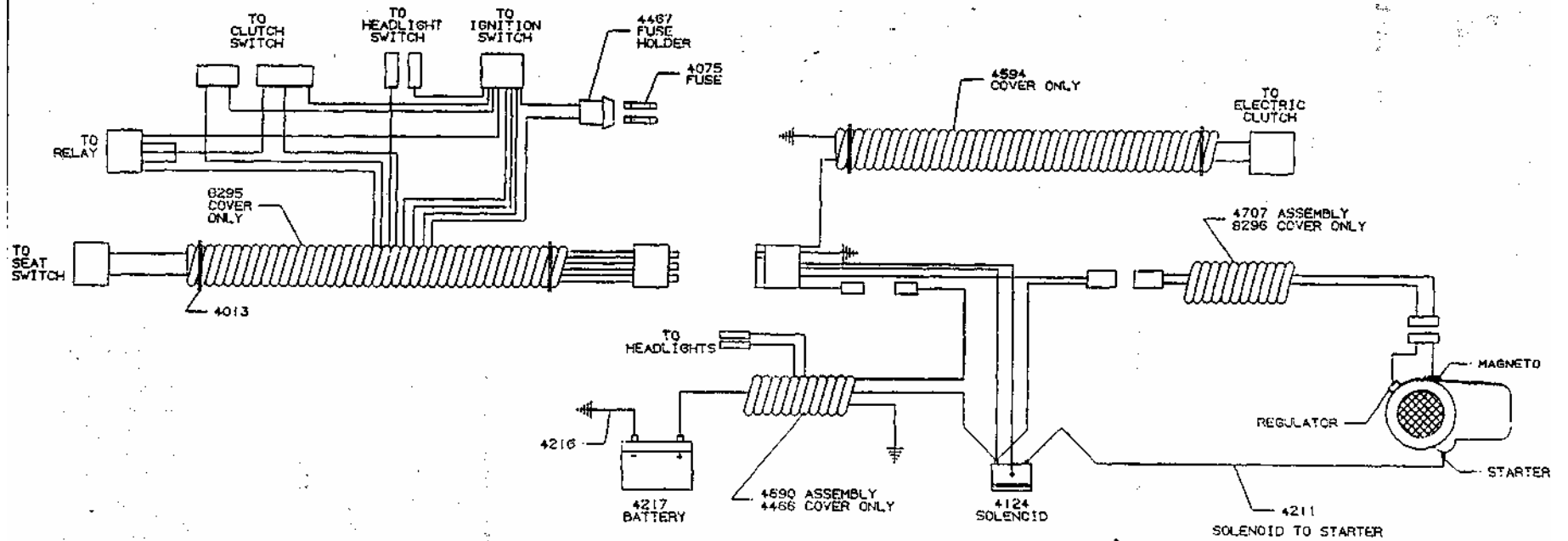


BODY WIRING LOOM - 4672

REAR WIRING LOOM - 4667

WIRING KIT - 8184
(SEE ASSEMBLY BREAKDOWN)

WIRING ASSEMBLY (MODEL 428)



BODY WIRING LOOM - 4672

REAR WIRING LOOM - 4667

WIRING KIT - 8185
(SEE ASSEMBLY BREAKDOWN)

WIRING ASSEMBLY (MODEL 429)

Note: It is possible to install the engine to mower deck drive belt (P/N 6111) at this time; however, our engine manufacturers have suggested that this belt be installed after the engine has been fully serviced per manufacturers* suggestions and allowed to operate at 1/2 to 3/4 throttle settings for approximately (3) minutes. This will place the initial start up of the engine in a no load situation and allow complete engine lubrication.

Adjustment:

Install engine to mower deck drive belt (P/N 6111).

Check and adjust tire pressure.

Front 19 to 21 psi; Rear 8 to 12 psi.

Tires may have been over inflated for shipping purposes.

Place the mower on a level surface. Using the lift handle, raise the mower deck to a height which will allow measurements to be taken from the surface to the tops of the two outer mower deck- cutter blades (P/N 8688).

Align both outer mower deck cutter blades to obtain a side to side measurement. Starting with the left blade as viewed from operator's position, secure measurement from level surface to the bottom of the cutter blade tip, rotate blade and check measurement on opposite end of cutter blade. Tip to tip measurement on the same cutter blade should not vary more than 1/8th of an inch. Maintain measurement taken and verify against the right outer cutter blade. If adjustment is required, loosen or tighten the nuts on the two rear l-rods.

Align both outer mower deck cutter blades front to rear as viewed from operator's position. Measure from surface to the bottom of the cutter blade tip, at the rear of the mower deck. Using the nut on the single front L - rod, loosen or tighten as required to place the mower deck at an attitude of approximately 1/8th of an inch higher in the rear than the front of the deck.

Recheck belt routing and alignment, start engine, burnish in electric blade clutch using at least (5) engagements at 3/4 to full throttle settings. Each engagement should last approximately (5) seconds.

Note: The completed adjustment places the mower deck in an attitude or position which will produce a quality cut. Ground speed, grass conditions, types of grass, tire pressures, dull or bent blades and loose belts are just some of the factors which will cause poor cut quality.