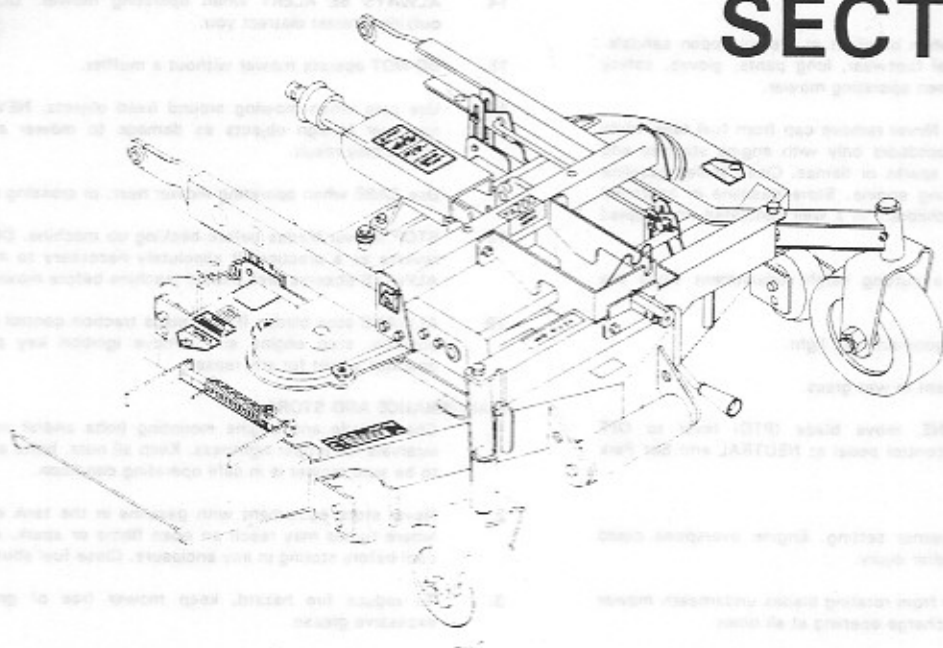




YAZOO

Parts Manual for PSR 62 CUTTING SECTION



**Professional Quality Lawn Care Equipment
since 1945**

Yazoo Manufacturing Company's policy is to improve its products whenever it is possible and practical to do so. In a effort to keep pace with changes in technology, Yazoo reserves the right to make changes or improvements at any time without incurring any obligation to make such changes on products previously manufactured.

MANUAL # 1301-275 (1 2/95)

IMPORTANT SAFETY INSTRUCTIONS

WARNING: Lawnmowers are capable of amputating hands and feet and can throw objects that can cause injury and damage! Serious injury could result if the following safety instructions are not observed. Carefully read this manual and question your dealer if something is not clear. If the dealer is unable to answer to your satisfaction, write or call the Customer Service Department at Yazoo Manufacturing Co., 3650 Bay Street, Jackson, MS 39213 (phone 601-366-6421)

GENERAL SAFETY PRECAUTION: The following safety instructions should be followed whenever the mower is being used. A constant state of awareness, concern, prudence and proper training should prevail over all persons involved in the operation, transport, maintenance and storage of the mower. Good judgement and common sense should always prevail. Take efforts to prevent the possibility of unauthorized or unknown use, or availability of this mower to anyone outside your direct supervision.

TRAINING

1. Read the operator's manual carefully. Be thoroughly familiar with the controls and the proper use of the equipment.
2. DO NOT allow children in yard when machine is operated. Keep the area of operation clear of all persons, particularly small children, and pets.
3. DO NOT allow pre-teenage children to operate machine. Only responsible teenagers with mature judgement shall be allowed to operate machine and only under close supervision.
4. DO NOT attempt to carry children or any passengers. Machine was designed to carry only the operator.

PREPARATION

1. Thoroughly inspect the area where the equipment is to be used and remove all stones, sticks, wires, bones and other foreign objects. Also note the location of holes, stumps, fences and other possible hazards.
2. DO NOT operate mower when barefoot or wearing open sandals. ALWAYS WEAR substantial footwear, long pants, gloves, safety goggles, ear plugs, etc., when operating mower.
3. Handle gasoline with care! Never remove cap from fuel tank while engine is running. Refuel outdoors only with engine stopped and cool. Keep fuel away from sparks or flames. Clean spilled gasoline from machine before starting engine. Store gasoline in approved container, out of reach of children, in a well ventilated unoccupied building.
4. NEVER attempt to make a cutting height adjustment while the engine is running.
5. Mow only in daylight or in good artificial light.
6. NEVER operate the equipment in wet grass.
7. BEFORE STARTING ENGINE, move blade (PTO) lever to OFF position and SET traction control pedal at NEUTRAL and Set Park Brake.

OPERATION

1. DO NOT alter engine governor setting. Engine overspeed could result in severe damage and/or injury.
2. Keep hands and feet away from rotating blades underneath mower deck. Keep clear of the discharge opening at all times.
3. STOP blades (PTO) when crossing gravel drives, walks or roads and under all conditions where thrown objects might be a hazard.
4. After striking a foreign object, stop engine, remove ignition key, remove Spark Plug Wire(s), thoroughly inspect mower for any damage, and repair damage before restarting and operating the mower.
5. If the equipment should start to vibrate abnormally, stop engine, remove ignition key, remove Spark Plug Wire(s), and immediately check for the cause. Vibration is generally a warning of trouble.
6. Before inspecting, cleaning or repairing mower, STOP engine and make certain blades and all moving parts have stopped. Disconnect engine Spark Plug Wire(s).
7. NEVER operate mower without proper guards, plates, safety switches or other safety protective devices in place and properly connected.
8. ALWAYS park mower on level ground with engine OFF and ignition key removed. NEVER leave mower unattended while engine is running, mower could roll out of control and cause serious injury. ALWAYS chock wheels for extra precaution.

9. DO NOT run engine indoors.
10. Move Blade Control Lever to Stop Position. Shut engine off, remove ignition key and wait until the blades come to a complete stop before unclogging discharge chute.
11. NEVER mow on a surface angle greater than 15 degrees (27% grade). ALWAYS mow across the face of slopes; never up and down. DO NOT attempt sudden starts or stops when mowing on a slope. Avoid sudden turns and use extreme caution when changing directions on any slope. ALWAYS turn in an uphill direction when changing directions on a slope.
12. If mower is stopped while going uphill, STOP blades and back mower slowly down hill.
13. NEVER attempt to operate mower if you are not sitting in operator's seat. ALWAYS get on and off machine from left side.
14. ALWAYS BE ALERT when operating mower. DO NOT let any outside interest distract you.
15. DO NOT operate mower without a muffler.
16. Use care when mowing around fixed objects. NEVER deliberately run over foreign objects as damage to mower and/or injury to others may result.
17. Use CARE when operating mower near, or crossing roadways.
18. STOP mower blades before backing up machine. DO NOT MOW in reverse as a practice. If absolutely necessary to mow in reverse, ALWAYS observe area behind machine before mowing.
19. ALWAYS stop blades (PTO), place traction control pedal in neutral position, stop engine and remove ignition key prior to leaving operator's seat for any reason.

MAINTENANCE AND STORAGE

1. Check blade and engine mounting bolts and/or nuts at frequent intervals for proper tightness. Keep all nuts, bolts and screws tight to be sure mower is in safe operating condition.
2. Never store equipment with gasoline in the tank inside a building where fumes may reach an open flame or spark. Allow engine to cool before storing in any enclosure. Close fuel shut-off valve.
3. To reduce fire hazard, keep mower free of grass, leaves, or excessive grease.
4. Have your mower inspected and serviced each year by an authorized Yazoo dealer. Determine if any additional devices are available which might upgrade the safety of your mower.
5. Factory specified Yazoo replacement parts must be used to assure adequate protection against injury.
6. Before attempting to disconnect a fuel or hydraulic line, safely relieve pressure from line.
7. ALWAYS keep body and hands away from pin holes, fittings or nozzles that eject fluid under high pressure. ALWAYS use cardboard or a piece of paper - NEVER YOUR HANDS OR BODY PART - to search for leaks. Fluids escaping under high pressure can have sufficient force to penetrate skin and do serious damage. If fluid is injected into the skin, it must be surgically removed within a few hours by a doctor familiar with this form of injury or gangrene may result.

DECALS



0401-375

YAZOO MFG. CO., INC.
P.O. BOX 4449 / 3650 BAY ST.
JACKSON, MS 39206-4449
MS001110 1/8 1/8

0401-404
0401-406



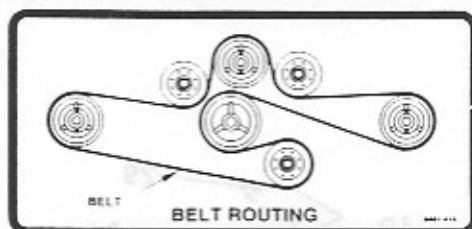
0401-110



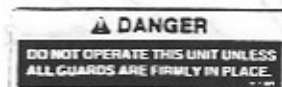
0401-111

62

0401-419



0401-416



0401-385



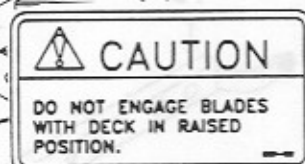
0401-221



0401-415



0401-111



0401-432

YAZOO
MASTER
MOWER

0401-421

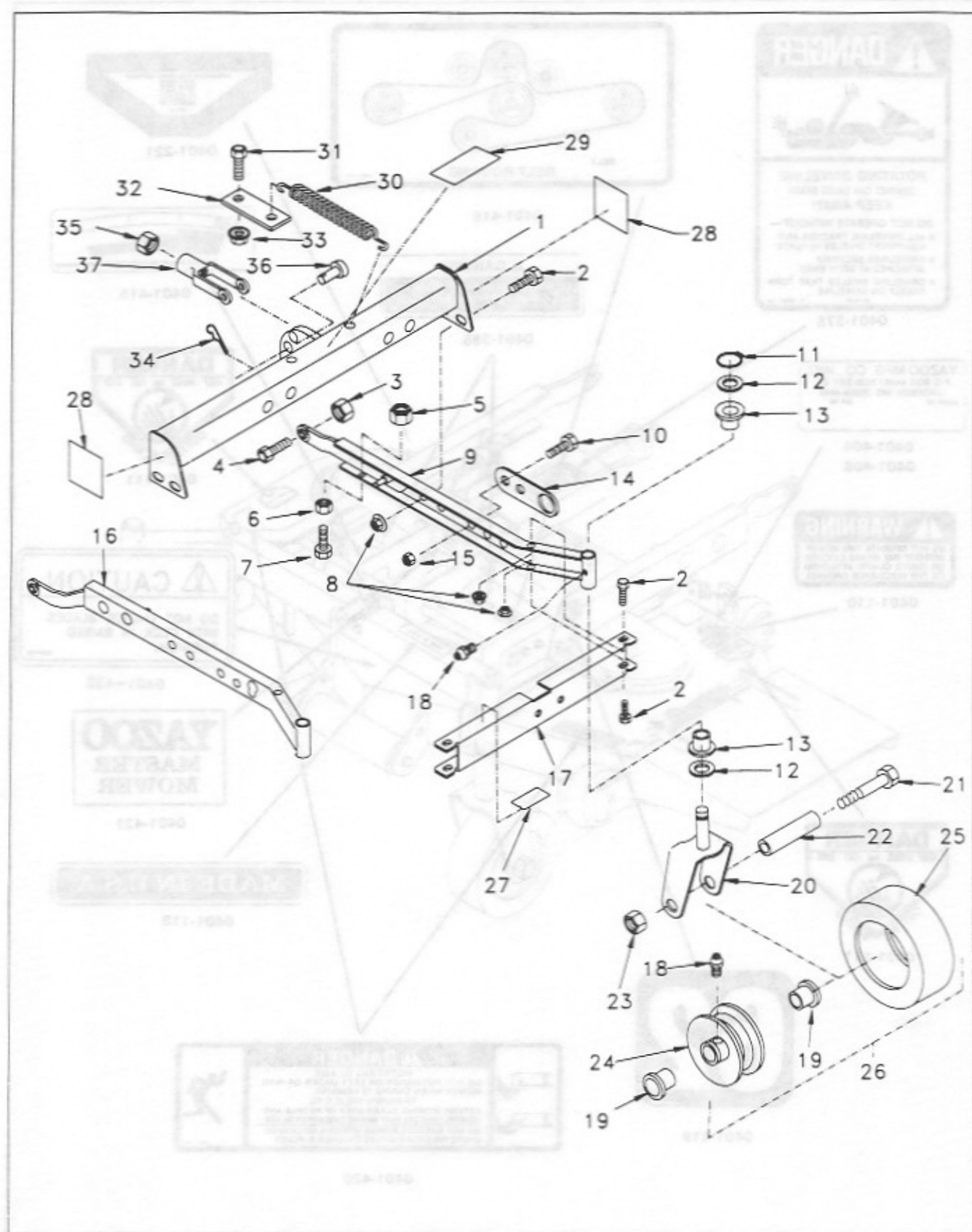
MADE IN U.S.A.

0401-118



0401-420

FRAME ASSEMBLY

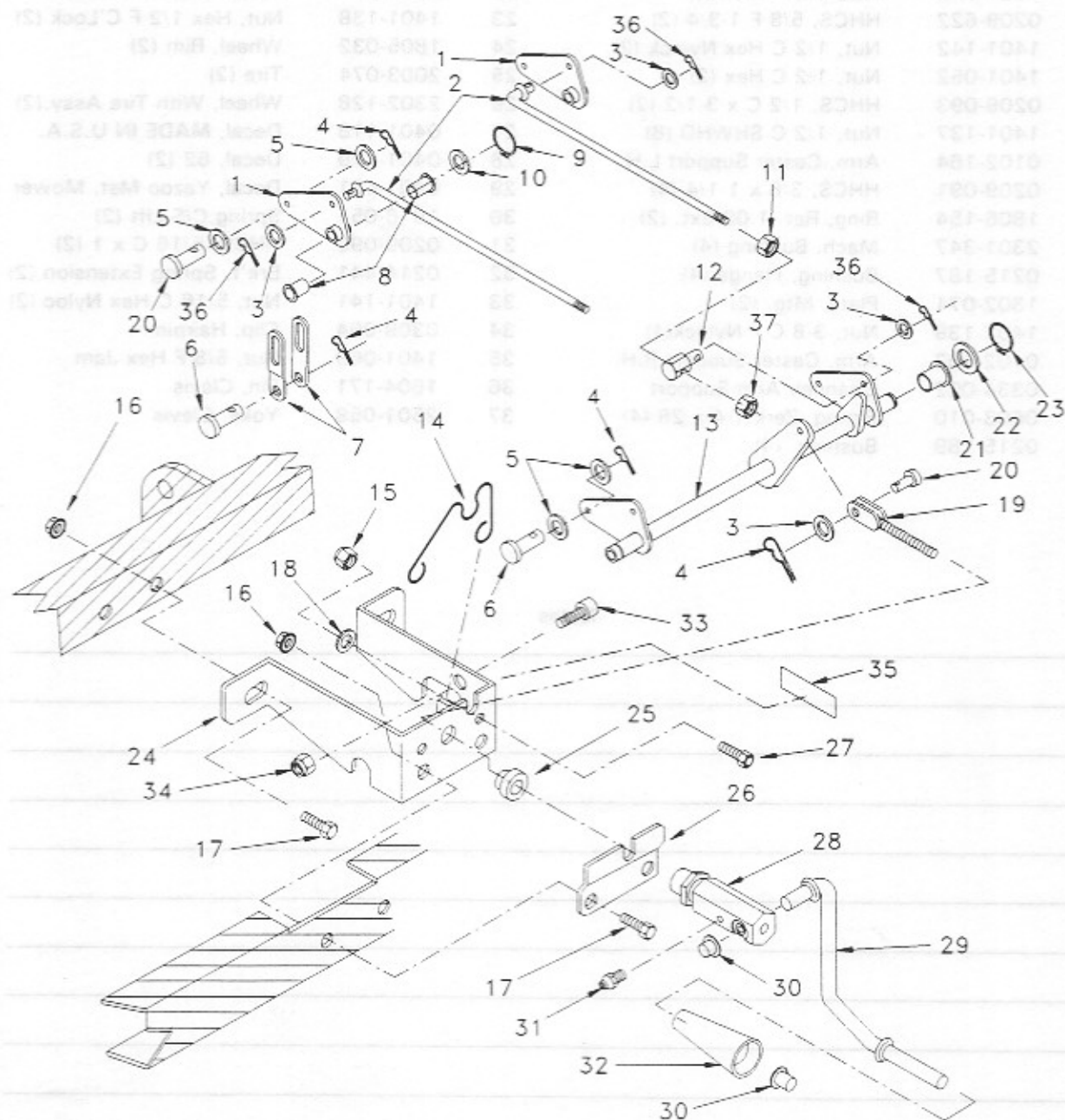


FRAME ASSEMBLY

ITEM	PART NO.	DESCRIPTION	ITEM	PART NO.	DESCRIPTION
1	1212-011	Deck, Lift Channel	20	2501-057	Yoke, Caster (2)
2	0209-848	HHCS, 1/2 C x 1-1/4 (8)	21	0209-556	HHCS, 1/2 F x 6 (2)
3	1401-072	Nut, 5/8 F Lock (2)	22	2005-071	Tube, Caster Wheel (2)
4	0209-622	HHCS, 5/8 F 1-3/4 (2)	23	1401-138	Nut, Hex 1/2 F C'Lock (2)
5	1401-142	Nut, 1/2 C Hex Nylock (2)	24	1805-032	Wheel, Rim (2)
6	1401-052	Nut, 1/2 C Hex (2)	25	2003-074	Tire (2)
7	0209-093	HHCS, 1/2 C x 3-1/2 (2)	26	2302-128	Wheel, With Tire Assy.(2)
8	1401-137	Nut, 1/2 C SHWHD (8)	27	0401-118	Decal, MADE IN U.S.A.
9	0102-164	Arm, Caster Support L.H	28	0401-419	Decal, 62 (2)
10	0209-091	HHCS, 3/8 x 1-1/4 (4)	29	0401-421	Decal, Yazoo Mst. Mower
11	1806-154	Ring, Ret. 1.00 Ext. (2)	30	1916-051	Spring,C/S Lift (2)
12	2301-347	Mach. Bushing (4)	31	0209-092	HHCS, 5/16 C x 1 (2)
13	0215-187	Bushing, Flange (4)	32	0214-441	Brk't, Spring Extension (2)
14	1302-071	Plate, Mtg. (2)	33	1401-141	Nut, 5/16 C Hex Nyloc (2)
15	1401-139	Nut, 3/8 C x Nylock(4)	34	0309-064	Clip, Hairpin
16	0102-163	Arm, Caster Support R.H.	35	1401-069	Nut, 5/8 F Hex Jam
17	0334-002	Channel, Arm Support	36	1604-171	Pin, Clevis
18	0603-010	Fitting, Zerk 1/4 x 28 (4)	37	2501-058	Yoke, Clevis
19	0215-189	Bushing, (4)			

Notes

LIFT ASSEMBLY

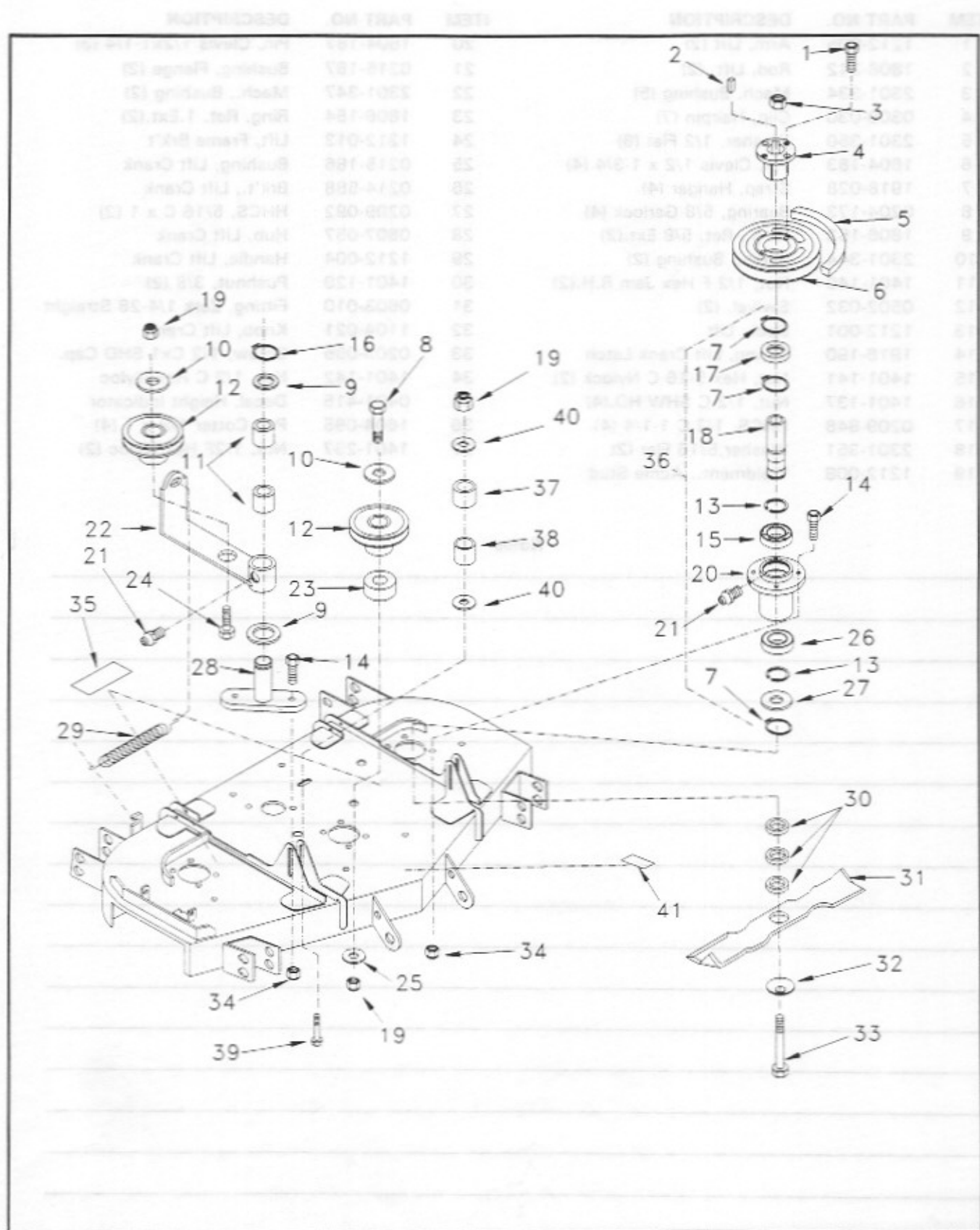


LIFT ASSEMBLY

ITEM	PART NO.	DESCRIPTION	ITEM	PART NO.	DESCRIPTION
1	1212-005	Arm, Lift (2)	20	1604-187	Pin, Clevis 1/2x1-1/4 (3)
2	1808-342	Rod, Lift (2)	21	0215-187	Bushing, Flange (2)
3	2301-334	Mach. Bushing (5)	22	2301-347	Mach., Bushing (2)
4	0309-030	Clip, Hairpin (7)	23	1806-154	Ring, Ret. 1.Ext.(2)
5	2301-350	Washer, 1/2 Flat (8)	24	1212-013	Lift, Frame Brk't
6	1604-183	Pin, Clevis 1/2 x 1-3/4 (4)	25	0215-186	Bushing, Lift Crank
7	1918-028	Strap, Hanger (4)	26	0214-588	Brk't., Lift Crank
8	0204-173	Bearing, 5/8 Garlock (4)	27	0209-092	HHCS, 5/16 C x 1 (2)
9	1806-153	Ring., Ret. 5/8 Ext.(2)	28	0807-057	Hub, Lift Crank
10	2301-344	Mach., Bushing (2)	29	1212-004	Handle, Lift Crank
11	1401-140	Nut, 1/2 F Hex Jam R.H.(2)	30	1401-129	Pushnut, 3/8 (2)
12	0502-032	Swivel, (2)	31	0603-010	Fitting, Zerk 1/4-28 Straight
13	1212-001	Deck, Lift	32	1104-021	Knob, Lift Crank
14	1916-190	Spring, Lift Crank Latch	33	0209-095	Screw, 1/2 Cx1 SHD Cap.
15	1401-141	Nut, Hex 5/16 C Nylock (2)	34	1401-142	Nut, 1/2 C Hex Nyloc
16	1401-137	Nut, 1/2 C SHW HD.(4)	35	0401-415	Decal, Height Indicator
17	0209-848	HHCS, 1/2 C 1-1/4 (4)	36	1604-095	Pin, Cotter 1/8 x 1 (4)
18	2301-351	Washer, 5/16 Flat (2)	37	1401-237	Nut, 1/2F Hex Nyloc (2)
19	1212-008	Weldment., Acme Stud			

Notes

DECK ASSEMBLY

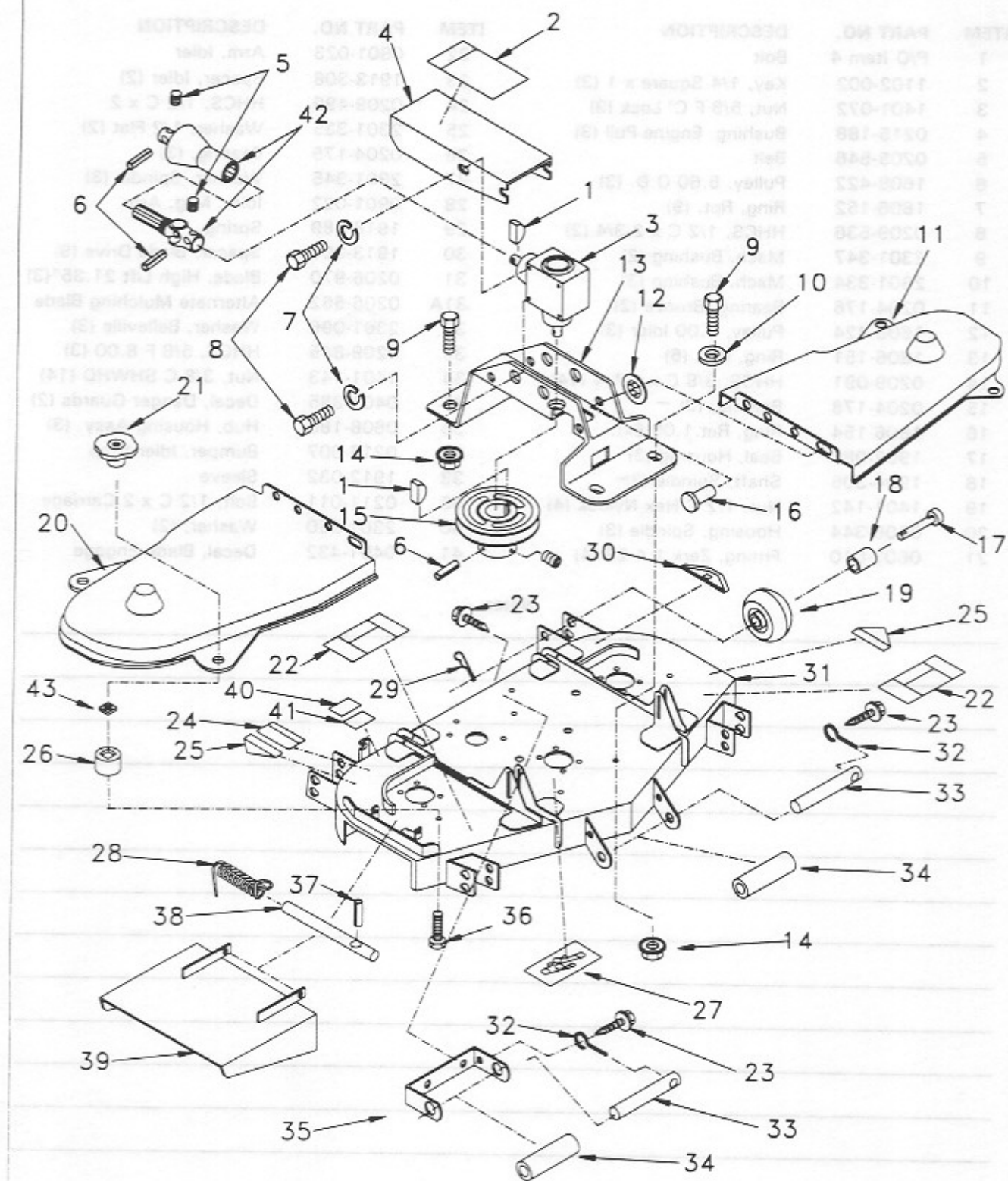


DECK ASSEMBLY

ITEM	PART NO.	DESCRIPTION	ITEM	PART NO.	DESCRIPTION
1	P/O Item 4	Bolt	22	0901-023	Arm, Idler
2	1102-002	Key, 1/4 Square x 1 (3)	23	1913-308	Spacer, Idler (2)
3	1401-072	Nut, 5/8 F C' Lock (3)	24	0209-499	HHCS, 1/2 C x 2
4	0215-188	Bushing, Engine Pull (3)	25	2301-335	Washer, 1/2 Flat (2)
5	0205-546	Belt	26	0204-175	Bearing, (3)
6	1608-422	Pulley, 5.60 O.D. (3)	27	2301-345	Washer, Spindle (3)
7	1806-152	Ring, Ret. (9)	28	0901-022	Idler, Mtg. Arm
8	0209-536	HHCS, 1/2 C x 2-3/4 (2)	29	1916-189	Spring,
9	2301-347	Mach. Bushing (2)	30	1913-307	Spacer, Blade Drive (9)
10	2301-334	Mach. Bushing (3)	31	0206-970	Blade, High Lift 21.35" (3)
11	0204-176	Bearing, Bronze (2)	31A	0206-562	Alternate Mulching Blade
12	1608-424	Pulley, 5.00 Idler (3)	32	2301-096	Washer, Belleville (3)
13	1806-151	Ring, Ret. (6)	33	0209-845	HHCS, 5/8 F 8.00 (3)
14	0209-091	HHCS, 3/8 C x 1-1/4 (14)	34	1401-143	Nut, 3/8 C SHWHD (14)
15	0204-178	Bearing, (3) —	35	0401-385	Decal, Danger Guards (2)
16	1806-154	Ring, Ret. 1.00 Ext.	36	0808-180	Hub, Housing Assy. (3)
17	1902-080	Seal, Housing (3)	37	0216-007	Bumper, Idler Stop
18	1904-305	Shaft, Spindle (3) —	38	1912-032	Sleeve
19	1401-142	Nut, 1/2 C Hex Nylock (4)	39	0211-011	Bolt, 1/2 C x 2 Carriage
20	0806-344	Housing, Spindle (3)	40	2301-350	Washer, (2)
21	0603-010	Fitting, Zerk 1/4-28 (4)	41	0401-432	Decal, Blade Engage

Notes

DECK ASSEMBLY

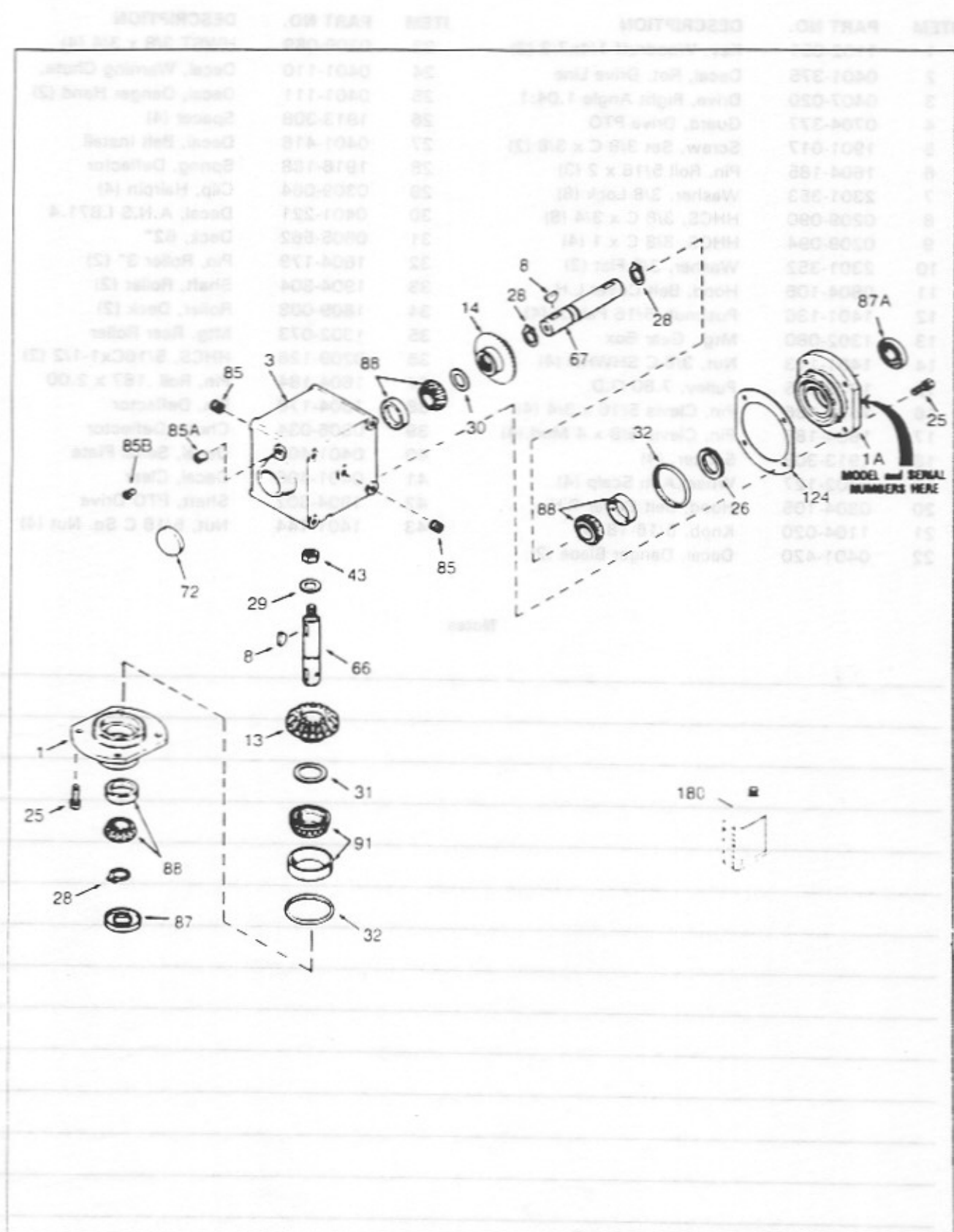


DECK ASSEMBLY

ITEM	PART NO.	DESCRIPTION	ITEM	PART NO.	DESCRIPTION
1	1102-051	Key, Woodruff 1/4x7/8 (2)	23	0209-089	HWST 3/8 x 3/4 (4)
2	0401-375	Decal, Rot. Drive Line	24	0401-110	Decal, Warning Chute,
3	0407-020	Drive, Right Angle 1.04:1	25	0401-111	Decal, Danger Hand (2)
4	0704-377	Guard, Drive PTO	26	1913-308	Spacer (4)
5	1901-017	Screw, Set 3/8 C x 3/8 (2)	27	0401-416	Decal, Belt Install
6	1604-185	Pin, Roll 5/16 x 2 (3)	28	1916-188	Spring, Deflector
7	2301-353	Washer, 3/8 Lock (8)	29	0309-064	Clip, Hairpin (4)
8	0209-090	HHCS, 3/8 C x 3/4 (8)	30	0401-221	Decal, A.N.S I.B71.4
9	0209-094	HHCS, 3/8 C x 1 (4)	31	0605-562	Deck, 62"
10	2301-352	Washer, 3/8 Flat (2)	32	1604-179	Pin, Roller 3" (2)
11	0804-106	Hood, Belt Cover L.H.	33	1904-304	Shaft, Roller (2)
12	1401-136	Pushnut, 5/16 Palnut (4)	34	1809-008	Roller, Deck (2)
13	1302-080	Mtg., Gear Box	35	1302-073	Mtg. Rear Roller
14	1401-143	Nut, 3/8 C SHWHD (4)	36	0209-126	HHCS, 5/16Cx1-1/2 (2)
15	1608-425	Pulley, 7.80 O.D.	37	1604-184	Pin, Roll .187 x 2.00
16	1604-186	Pin, Clevis 5/16 x 3/4 (4)	38	1604-178	Pin, Deflector
17	1604-188	Pin, Clevis 5/8 x 4 Mod.(4)	39	0306-034	Chute, Deflector
18	1913-309	Spacer, (4)	40	0401-404	Decal, Serial Plate
19	2302-127	Wheel,Anti Scalp (4)	41	0401-406	Decal, Clear
20	0804-105	Hood, Belt Cover R.H.	42	1904-302	Shaft, PTO Drive
21	1104-020	Knob, 5/16-18 (4)	43	1401-144	Nut, 5/16 C Sq. Nut (4)
22	0401-420	Decal, Danger Blade (2)			

Notes

PEERLESS RIGHT ANGLE DRIVE MODEL: 1100-042



**PEERLESS RIGHT ANGLE DRIVE
MODEL: 1100-042**

PLUS1 (TM) Parts List Report

Manufacturer : PEERLESS
Model : 1100-042
Component : PARTS LIST

YZ 0407-020

Ref.	Part#	Description	Qty
=====	=====	=====	=====
1	786104A	Retainer Cap	1
1 A	786105	Retainer Cap	1
3	770076	Right Angle Drive Housing	1
8	792114	Woodruff Key	2
13	778167	Bevel Gear (25 teeth)	1
14	778171	Bevel Gear (26 teeth)	1
25	792037	Screw, 5/16-18 x 1"	8
26	780137	Load Ring	1
28	792113	Retaining Ring	3
29	792115	Washer	1
30	780131	Shim (1-1/2" OD x 1-1/64" ID x .002 thick)	1
31	780138	Shim (2" OD x 1.531" ID x .002 thick)	1
32	788063	"O" Ring	2
43	792110A	Hex Jam Nut	1
66	776381	Input Shaft	1
67	776382	Output Shaft	1
72	792111	Plug	1
85	792116	Pipe Plug, 1/4-18	2
85 A	792039	Plug, 1/8-27	1
85 B	792118	Relief Valve	1
87	788064	Oil Seal, 1"	1
87 A	788065	Oil Seal 1"	1
88	780132	Bearing & Cup Assembly (SEE REPAIR MANUAL)	3
91	780134	Bearing & Cup Assembly (SEE REPAIR MANUAL)	1
124	780136	Shim	1
180	730229A	Gear Oil 80W90	1

***** END OF PARTS LIST *****

Notes

FEERLESS RIGHT ANGLE DRIVE
MODEL: 1100-042

Manufacturer : FEERLESS
Model : 1100-042
Component : PARTS LIST
Y= 0407-020

Qty	Part No.	Description
1	780104A	Rebuild Kit
1	780105	Rebuild Kit
1	780106	Right Angle Drive Housing
1	780107	Mounting Key
1	780108	Input Gear (15 teeth)
1	780109	Output Gear (15 teeth)
1	780110	Input Shaft
1	780111	Output Shaft
1	780112	Load Ring
1	780113	Rebuild Kit
1	780114	Rebuild Kit
1	780115	Rebuild Kit
1	780116	Rebuild Kit
1	780117	Rebuild Kit
1	780118	Rebuild Kit
1	780119	Rebuild Kit
1	780120	Rebuild Kit
1	780121	Rebuild Kit
1	780122	Rebuild Kit
1	780123	Rebuild Kit
1	780124	Rebuild Kit
1	780125	Rebuild Kit
1	780126	Rebuild Kit
1	780127	Rebuild Kit
1	780128	Rebuild Kit
1	780129	Rebuild Kit
1	780130	Rebuild Kit
1	780131	Rebuild Kit
1	780132	Rebuild Kit
1	780133	Rebuild Kit
1	780134	Rebuild Kit
1	780135	Rebuild Kit
1	780136	Rebuild Kit
1	780137	Rebuild Kit
1	780138	Rebuild Kit
1	780139	Rebuild Kit
1	780140	Rebuild Kit
1	780141	Rebuild Kit
1	780142	Rebuild Kit
1	780143	Rebuild Kit
1	780144	Rebuild Kit
1	780145	Rebuild Kit
1	780146	Rebuild Kit
1	780147	Rebuild Kit
1	780148	Rebuild Kit
1	780149	Rebuild Kit
1	780150	Rebuild Kit

***** END OF PARTS LIST *****

Notes YAZOO LIMITED YEAR WARRANTY

1. The Limited One-Year Warranty is issued by Yazoo Manufacturing Company, Inc., only to the original purchaser of a Yazoo product. This warranty shall extend only to the original purchaser or to a person to whom the original purchaser has transferred the product.

2. The term "defective" as used in this warranty shall mean a product which, in the opinion of the manufacturer, is defective in design or workmanship. The term "defective" shall not include any product which is damaged by accident, misuse, or neglect, or which is altered or modified in any way.

3. In the event that any Yazoo product is found to be defective, the manufacturer shall, at its option, either repair or replace the product, or refund the purchase price. The manufacturer shall not be bound by any limitation on the amount or type of replacement product.

4. The manufacturer shall not be responsible for any damage to or loss of any property caused by the use of any Yazoo product.

5. To obtain prompt service on a Yazoo product, the purchaser should contact the nearest Yazoo dealer.

6. The purchaser should retain the original receipt for the product as proof of purchase.

7. This warranty is void if the product is used for any purpose other than that for which it was designed.

8. The purchaser should contact the nearest Yazoo dealer for more information.

9. If you have questions concerning this Limited One-Year Warranty, they should be referred to:

Yazoo Manufacturing Company, Inc.
1000 West 10th Avenue, Minneapolis, MN 55408
Attn: Customer Service Department
Phone: (612) 338-1234

10. The purchaser should retain this warranty card as proof of purchase.

11. This warranty is void if the product is used for any purpose other than that for which it was designed.

12. The purchaser should contact the nearest Yazoo dealer for more information.

13. The purchaser should retain the original receipt for the product as proof of purchase.

14. The purchaser should retain this warranty card as proof of purchase.

15. The purchaser should contact the nearest Yazoo dealer for more information.

16. The purchaser should retain the original receipt for the product as proof of purchase.

17. The purchaser should retain this warranty card as proof of purchase.

18. YAZOO MAKES NO OTHER EXPRESS OR IMPLIED WARRANTY OR REPRESENTATION OF FITNESS FOR A PARTICULAR PURPOSE. THE PURCHASER ACCEPTS THE PRODUCT AS IS, WITH ALL FAULTS AND DEFECTS. YAZOO SHALL HAVE NO LIABILITY FOR INCIDENTAL OR CONSEQUENTIAL DAMAGES, INCLUDING BUT NOT LIMITED TO, LOSS OF PROFITS OR OTHER COMMERCIAL LOSS, OR FOR ANY OTHER DAMAGES, INCLUDING BUT NOT LIMITED TO, LOSS OF PROFITS OR OTHER COMMERCIAL LOSS. THE ABOVE STATEMENT DOES NOT APPLY TO YOU. SOME STATES DO NOT ALLOW THE EXCLUSION OR LIMITATION OF INCIDENTAL OR CONSEQUENTIAL DAMAGES, SO THE ABOVE LIMITATION MAY NOT APPLY TO YOU. THE PURCHASER SHOULD RETAIN THE ORIGINAL RECEIPT FOR THE PRODUCT AS PROOF OF PURCHASE.

19. This warranty is void if the product is used for any purpose other than that for which it was designed.

20. The purchaser should contact the nearest Yazoo dealer for more information.

21. The purchaser should retain the original receipt for the product as proof of purchase.

22. The purchaser should retain this warranty card as proof of purchase.

23. The purchaser should contact the nearest Yazoo dealer for more information.

YAZOO LIMITED ONE YEAR WARRANTY

1. This Limited One-Year Warranty is issued by Yazoo Manufacturing Company, Inc., only to the original purchaser. If Yazoo equipment is leased by Yazoo, this warranty shall extend also to the original lease as if such leaser were the original owner.
2. Yazoo warrants that all new equipment manufactured by Yazoo (Yazoo Products) shall be free of defects in material and workmanship for the term described in paragraph 4 below. Except as herein-after provided, this warranty does not cover any engine forming a part of the Yazoo product. Engines are covered by and subject to separate warranties of the manufacturers thereof.
3. In the event that any Yazoo Product warranted hereunder shall be defective or fail to conform with this warranty, Yazoo shall, subject to the provisions hereof, pay for, or provide labor and materials for, the repair or replacement of such defective Yazoo Product.
4. This warranty is for one year (12 months) from purchase date for Yazoo products.
5. To obtain Warranty Service on a Yazoo Product use this procedure:
 - a. Locate the nearest Yazoo dealer.
 - b. If you have moved notify any Yazoo dealer in your area. You must be able to confirm purchase date to validate your warranty.
 - c. Make arrangements to have the equipment delivered to the dealer (refer to paragraph 6a).
 - d. If you have questions concerning the Yazoo Limited Warranty, they should be referred to:

Yazoo Manufacturing Company, Inc.
P.O. Box 4449 / Jackson, Mississippi 39296
Attn.: Customer Service Department
1 (800) 723-9496
 - e. Warranty service on Yazoo Products must be performed by an authorized Yazoo dealer.
6. This warranty does not cover the following:
 - a. Transportation to the Yazoo dealership. (If the Yazoo dealer provides transportation he will charge for such service).
 - b. Normal maintenance services and normal maintenance items such as tires, brakes, brake shoes, spark plugs, belts, oil, air filters, mower blades, gauge wheels, skids and other wear items.
 - c. Any Yazoo Product which has been altered or modified in any way.
 - d. Any repair or replacement occasioned by customer neglect or lack of maintenance. (The purchaser is responsible for making sure that Yazoo Products are operated and serviced as directed in the applicable manual or service instruction. Incorrect use or maintenance will void this Warranty).
 - e. Any repair occasioned by the use of any attachment not approved by Yazoo. (The use of any such attachment will void this Warranty).
7. YAZOO MAKES NO OTHER EXPRESS OR IMPLIED WARRANTY, OR WARRANTIES AS TO THE MERCHANTABILITY OR FITNESS FOR A PARTICULAR PURPOSE. ALL WARRANTIES ARE LIMITED IN DURATION TO THE TERMS SET OUT IN PARAGRAPH 4, ABOVE. YAZOO SHALL HAVE NO LIABILITY FOR INCIDENTAL OR CONSEQUENTIAL DAMAGES RESULTING FROM THE BREACH OF ANY WARRANTY, INCLUDING, BUT NOT LIMITED TO, LIABILITY FOR INCONVENIENCE, RENTAL OR PURCHASE OF REPLACEMENT EQUIPMENT, OR FOR LOSS OF PROFITS OR OTHER COMMERCIAL LOSS. SOME STATES DO NOT ALLOW A LIMITATION ON HOW LONG AN IMPLIED WARRANTY LASTS, SO THE ABOVE STATEMENT MAY NOT APPLY TO YOU. SOME STATES DO NOT ALLOW THE EXCLUSION OR LIMITATION OF INCIDENTAL OR CONSEQUENTIAL DAMAGES, SO THE ABOVE LIMITATION OR EXCLUSION MAY NOT APPLY TO YOU.
8. This Warranty is not subject to change or modification by anyone, including Yazoo dealers, and no Yazoo dealer is authorized to make any representations on behalf of Yazoo Manufacturing Company, Inc.

Revised 12/14/92

YAZOO MANUFACTURING COMPANY
POST OFFICE BOX 4449
JACKSON, MISSISSIPPI 39296-4449