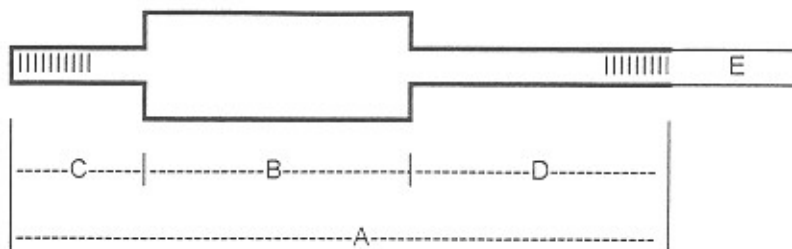
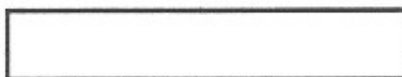


SHAFT CHART

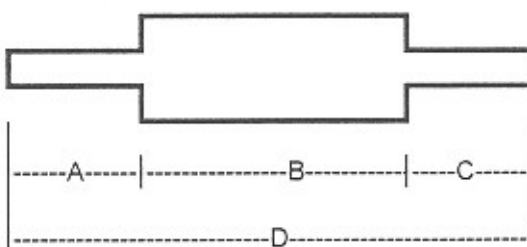


PART NUMBER	A LENGTH	B LENGTH	C LENGTH	D LENGTH	E LENGTH	THREAD
1904-006	7 9/16"	3 9/16"	2 1/8"	1 7/8"	3/4"	R. HAND
1904-007	10 1/16"	5 3/16"	2 5/8"	2 1/4"	5/8"	R. HAND
1904-009	8 1/8"	3 9/16"	2 3/8"	2 1/8"	5/8"	R. HAND
1904-011	8 5/16"	3 9/16"	2 1/8"	2 9/16"	5/8"	R. HAND
1904-022	5 3/8"	3/4"	7/8"	3 13/16"	3/4"	R. HAND
1904-025	10 7/8"	5 3/16"	2 5/16"	3 5/16"	5/8"	R. HAND
1904-034	10 1/2"	4 7/16"	3 5/8"	2 3/8"	3/4"	R. HAND
1904-036	8 1/4"	2 1/2"	2 1/4"	3 1/2"	3/4"	R. HAND
1904-037	7 13/16"	2 3/4"	2 1/4"	2 3/4"	3/4"	L. HAND
1904-040	10 1/2"	4 7/16"	2 3/8"	3 5/8"	3/4"	L. HAND
1904-063	8 1/4"	2 3/4"	2 3/8"	3 1/8"	3/4"	L. HAND
1904-066	7 3/16"	TEE BAR SV30			3/4"	R. HAND
1904-230	9 1/16"	3 7/16"	2 3/8"	3 3/16"	3/4"	R. HAND
1904-247	10 1/8"	4 1/2"	2 3/8"	3 1/4"	3/4"	R. HAND
1904-249	7 3/4"	2 1/2"	2 3/8"	2 15/16"	3/4"	R. HAND
1904-260	5 5/16"	7/8"	2 3/8"	2"	3/4"	R. HAND
1904-261	6 1/16"	7/8"	2 3/8"	2 11/16"	3/4"	R. HAND
1904-266	7 3/4"	2 3/4"	2 3/8"	2 5/8"	3/4"	R. HAND
1904-271	5 7/8"	15/16"	2 1/4"	2 3/4"	3/4"	R. HAND
1904-275	5 9/16"	2 5/8"	1 3/16"	1 3/4"	3/4"	R. HAND
1904-284	8 3/4"	TEE BAR YR30-2, 3 & 4			3/4"	R. HAND
1904-282	8"	2 3/4"	2 3/8"	2 7/8"	3/4"	R. HAND
1904-294	8 11/16"	4 11/16"	2"	2"	5/8"	R. HAND
1904-295	9 1/4"	2 1/2"	2 3/8"	4 3/8"	3/4"	R. HAND
1904-316	7 1/4"	2 3/4"	2"	2 1/2"	3/4"	R. HAND

FSP CHART



PART NUMBER	A LENGTH	SHAFT DIA.	MODEL
1904-058	21 5/16"	5/8"	S-22
1904-060	24 9/16"	5/8"	S-26
1904-061	23 1/2"	5/8"	S-24
1904-065	27 5/16"	5/8"	SV-30
1904-068	20 9/16"	5/8"	SV-22
1904-069	22 13/16"	5/8"	SV-24
1904-071	24 3/4"	5/8"	SV-26
1904-093	19 3/8"	5/8"	AV-20
1904-094	20 9/16"	5/8"	AV-33-22
1904-095	22 1/2"	5/8"	B-66-33
1904-096	23 9/16"	5/8"	H-66-26



PART NUMBER	A LENGTH	B LENGTH	C LENGTH	D LENGTH	MODEL
1904-099	2 5/8"	16 3/16"	2 5/8"	21 1/2"	W-36
1904-100	2 3/4"	19 1/16"	2 3/4"	24 1/2"	W-48